

KRILL



Krill are small crustaceans found in massive numbers throughout the world's oceans.

Image: Northern Krill, Øystein Paulsen, used under creative commons BY-SA 3.0

KRILL



Krill are small crustaceans found in massive numbers throughout the world's oceans.

Image: Northern Krill, Øystein Paulsen, used under creative commons BY-SA 3.0

KRILL



Krill are small crustaceans found in massive numbers throughout the world's oceans.

Image: Northern Krill, Øystein Paulsen, used under creative commons BY-SA 3.0

KRILL



Krill are small crustaceans found in massive numbers throughout the world's oceans.

Image: Northern Krill, Øystein Paulsen, used under creative commons BY-SA 3.0

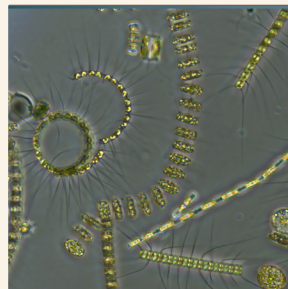
KRILL



Krill are small crustaceans found in massive numbers throughout the world's oceans.

Image: Northern Krill, Øystein Paulsen, used under creative commons BY-SA 3.0

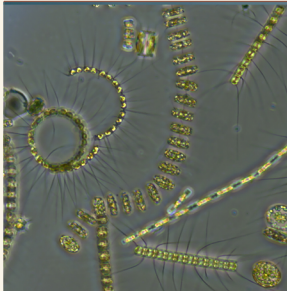
Phytoplankton



Phytoplankton are a wide variety of bacteria and protists that live in the layers of the ocean exposed to sunlight.

Image: Stephanie Anderson, NASA Earth Expeditions, Public domain.

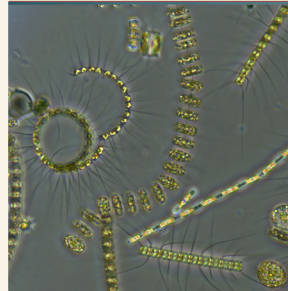
Phytoplankton



Phytoplankton are a wide variety of bacteria and protists that live in the layers of the ocean exposed to sunlight.

Image: Stephanie Anderson, NASA Earth Expeditions, Public domain.

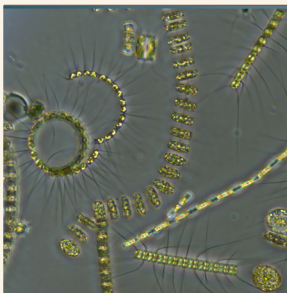
Phytoplankton



Phytoplankton are a wide variety of bacteria and protists that live in the layers of the ocean exposed to sunlight.

Image: Stephanie Anderson, NASA Earth Expeditions, Public domain.

Phytoplankton



Phytoplankton are a wide variety of bacteria and protists that live in the layers of the ocean exposed to sunlight.

Image: Stephanie Anderson, NASA Earth Expeditions, Public domain.

Phytoplankton



Phytoplankton are a wide variety of bacteria and protists that live in the layers of the ocean exposed to sunlight.

Image: Stephanie Anderson, NASA Earth Expeditions, Public domain.

Ground Plants



Ground plants of various species grow in the terrestrial areas of the Arctic.

Image: Eric Sanders, Author.

Ground Plants



Ground plants of various species grow in the terrestrial areas of the Arctic.

Image: Eric Sanders, Author.

Ground Plants



Ground plants of various species grow in the terrestrial areas of the Arctic.

Image: Eric Sanders, Author.

Ground Plants



Ground plants of various species grow in the terrestrial areas of the Arctic.

Image: Eric Sanders, Author.

Ground Plants



Ground plants of various species grow in the terrestrial areas of the Arctic.

Image: Eric Sanders, Author.

Fish



Multiple fresh and marine fish species live in or breed in Arctic waters.

Image: USFWS, Public domain.

Fish



Multiple fresh and marine fish species live in or breed in Arctic waters.

Image: USFWS, Public domain.

Fish



Multiple fresh and marine fish species live in or breed in Arctic waters.

Image: USFWS, Public domain.

Fish



Multiple fresh and marine fish species live in or breed in Arctic waters.

Image: USFWS, Public domain.

Baleen Whales



Baleen whales are some of the largest animals on the planet, yet use their baleen bristles to filter small food.

Image: USFWS, Public domain.

Toothed Whales



Toothed whales represent some of the most effective and even social marine predators.

Image: Rober Pittman, NOAA, Public domain.

Toothed Whales



Toothed whales represent some of the most effective and even social marine predators.

Image: Rober Pittman, NOAA, Public domain.

Insects



Insects can be abundant, even in the Arctic. They are important pollinators and food sources.

Image: D. Sikes, Used under Creative Commons BY-SA 2.0

Insects



Insects can be abundant, even in the Arctic. They are important pollinators and food sources.

Image: D. Sikes, Used under Creative Commons BY-SA 2.0

Insects



Insects can be abundant, even in the Arctic. They are important pollinators and food sources.

Image: D. Sikes, Used under Creative Commons BY-SA 2.0

Pinnipeds



Pinnipeds in the Arctic spend time both on land or ice as well as in the water looking for food.

Image: USFWS, Public domain.

Pinnipeds



Pinnipeds in the Arctic spend time both on land or ice as well as in the water looking for food.

Image: USFWS, Public domain.

Shorebirds



Many shorebird species come to the Arctic to find a mate and breed.

Image: Eric Sanders, Author.

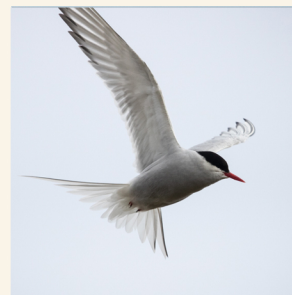
Shorebirds



Many shorebird species come to the Arctic to find a mate and breed.

Image: Eric Sanders, Author.

Shorebirds



Many shorebird species come to the Arctic to find a mate and breed.

Image: Eric Sanders, Author.

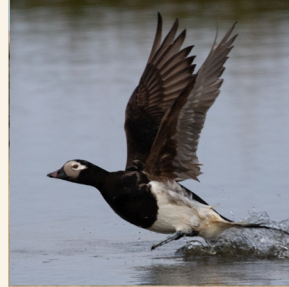
Waterfowl



Many waterfowl species come to the Arctic to find a mate and breed.

Image: Eric Sanders, Author.

Waterfowl



Many waterfowl species come to the Arctic to find a mate and breed.

Image: Eric Sanders, Author.

Waterfowl



Many waterfowl species come to the Arctic to find a mate and breed.

Image: Eric Sanders, Author.

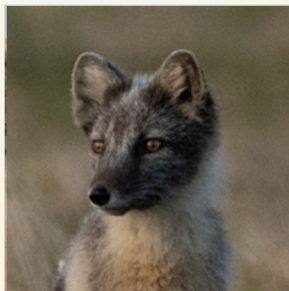
Birds of Prey



Many birds of prey species come to the Arctic to find a mate and breed as well as in search of food.

Image: David Armer, USAF, Public domain.

Arctic Fox



Arctic fox make the most of the warmer months to look for the abundant food sources.

Image: Eric Sanders, Author.

Alaskan Moose



Moose roam vast expanses looking for food during the warmer months.

Image: Eric Sanders, Author.

Sun



The sun is the starting point of energy on our planet.

Image: Eric Sanders, Author.

Threat

Tundra land eroded due to rising ocean levels.

Remove 1 ground plants card

Threat

Fisheries overharvested this year.

Remove 1 fish card

Threat

Harmful chemicals impact ocean water.

Remove 1 phytoplankton card

Threat

Improperly disposed fishing gear entangles many birds.

Remove 1 shorebirds card

Threat

Oil spill results in major environmental damage.

Remove 1 krill card

Threat

Migrating birds are illegally hunted out of season.

Remove 1 waterfowl card

Stewardship

Fishery management put into effect with great success.

Add 2 Fish Cards

Stewardship

Pesticide controls have been implemented.

Add 1 insect card

Stewardship

Chemical disposal regulations go into effect near the coast.

Add 1 phytoplankton card

Stewardship

Tundra land protected to be a refuge for wildlife.

Add 1 ground plant card

Stewardship

Additional protections added for marine mammals.

Add 1 pinniped, toothed whale, or baleen whale card

Stewardship

New regulations put in place on waterfowl protection.

Add 1 waterfowl card

