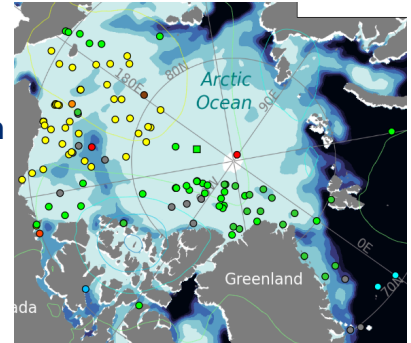
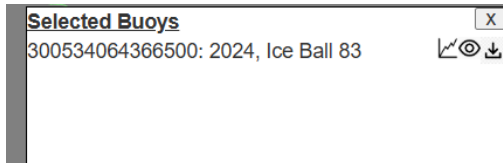


# Station 1: Tracking Ice with Remote Sensing

1. Using your tablet, open:  
[https://iabp.apl.uw.edu/IABP\\_Maps.html](https://iabp.apl.uw.edu/IABP_Maps.html)

2. Select a buoy by clicking a colored dot on the screen

3. Select the graph next to your buoy number in the white box to open tracking data



Where is your buoy located?

What might be influencing its path?

## Station 2: Polar Bear Tracking & Connection to Ice

1. Using your tablet, open: Polar Bears  
International Polar Bear Tracker

2. Select a bear on the screen by selecting a  
number



3. Open [https://iabp.apl.uw.edu/IABP\\_Maps.html](https://iabp.apl.uw.edu/IABP_Maps.html) on a separate tablet

4. Are there any buoys near the Hudson Bay? If not why might that be?

How do sea ice changes impact polar bears?

What can polar bear tracking tell us about ecosystem health?

## **Station 3: Action and Advocacy**

- Create a poster, infographic, or presentation to answer the following:

What do buoys and bears tell us about the Arctic?

How is climate change influencing this system?

Why does this matter for people, even people who live far from the Arctic?

Imagine you're a scientist or a policy advisor. What would you recommend to protect Arctic ecosystems or improve monitoring?

## **Station 4: Engineer an Arctic Buoy**

Draw a sketch of your buoy

What changes would you make?

What made your buoy successful?